

# TREKKER MOUNTAIN 2.0

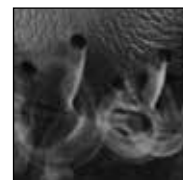
Art. No. 602018



**CE 0193 EN ISO 20345:2011 S3 HRO HI CI WR SRC  
CE EN ISO 17249:2013 + AC:2014 - LEVEL 1**

Leather thickness 2.6 – 2.8 mm, cut protection level 1, waterproof and breathable with GORE-TEX® Performance, leg height 19,5 cm, antistatic, sole 020

**Available sizes UK 3 ½ – 12, Extra large sizes UK 13 / 14**



HAIX® Climate System



RTC with countersunk seams



602018

## Upper Material

Oiled nubuk leather, hydrophobic, breathable (7,0 mg/cm<sup>2</sup>/h), 2.6 – 2.8 mm thick

## Cut Protection

Protection against cuts certified with cut level 1 (20m/sec.). Compliant with EN ISO 17249:2013 + AC:2014.

## Inner lining

GORE-TEX® Performance; waterproof and breathable. Highly abrasion-resistant lining with fleece midlayer. Optimized climate comfort for all year seasons and excessive use. Increased chemical protection.

## Insole

Dimensionally stable, torsion-proof, avoids punctual pressure (e.g. of stones).

## Foot bed

Anatomically formed, exchangeable, washable, very good moisture absorption, dries quickly.

## HAIX® Protective steel toe cap

Anatomically formed protective steel toe cap meets the highest safety requirements.

## HAIX® Protective sole

Flexible, metal, lightweight and puncture resistant midsole.

## Sole

Rubber/PU walking sole with proven street/ terrain tread, wear resistant and non-slip traction; large, bevelled contact surface and superior bending comfort. Excellent cold/heat insulation, fuel resistant and non-marking characteristics. Compliant with EN ISO 20345:2011.

## HAIX® Climate System

The HAIX Climate system uses the pumping movement, which permits air circulation with every step – moist air is released and fresh air comes in through the vent holes at the top of the boot.

## HAIX® CO System

Pressure relief, cushioning, correction of foot position correct posture and muscular balance.

## GRIP+ Spikes

Metal spikes that screw into the shoe sole provide extra grip and prevent slipping on branches and felled tree trunks.

## Others

Integrated heel bend, lacing system with eyelets permitting smooth movement, clamps, rubber toe cap, no side seams, possibility to screw in spikes, pulling strap

UK	3	3½	4	4½	5	5½	6	6½	7	7½	8	8½	9	9½	10	10½	11	11½	12	12½	13	13½	14	14½	15
EU	35	36	37	37	38	39	39	40	41	41	42	43	43	44	45	45	46	47	47	48	48	49	50	50	51
US	4	4½	5	5½	6	6½	7	7½	8	8½	9	9½	10	10½	11	11½	12	12½	13	13½	14	14½	15	15½	16

## HAIX®-Schuhe, Produktions- und Vertriebs GmbH

Auhofstrasse 10, 84048 Mainburg, Germany  
T. +49(0)8751/8625-0, F. +49(0)8751/8625-25  
info@haix.de, www.haix.com