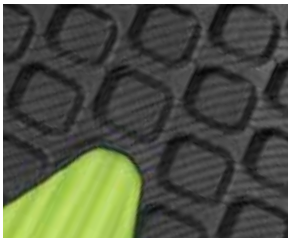
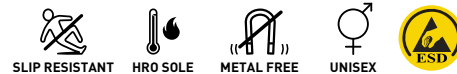


# PRODUCT DATA SHEET

Art. No. 63.550.0 - **RAPID GREEN MID** S3 ESD HRO SRC



- Protection: fiberglass cap and flexible FAP®lite midsole
- Plus: ESD, non-metallic, toe cap protection, TPU eyelet element for additional reinforcement
- Upper: high quality smooth full leather
- Lining: BreathActive functional lining
- Footbed: evercushion® CUSTOM FIT MID
- Sole: rubber sole MOTION CLOUD - 300°C heat and slip-resistant rubber outsole with IMPULSE.FOAM® midsole and POWER PLATE element for maximum cushioning, stability and comfort
- Sizes: 36 - 47



## Rubber Outsole MOTION CLOUD

The slip-resistant (SRC) and profiled rubber outsole is 300°C heat-resistant (HRO) and based on the latest running shoe technology.



## Fiberglass toe cap and FAPlite midsole

The high-tech fiberglass toe cap offers optimized protection and more freedom of toes. The new FAP®lite midsole is made of non-metallic, extremely tear-resistant textile fibres. It is breathable, durable and offers a high flexibility with a lower weight.



## IMPULSE.FOAM midsole

Ultimate comfort during long working days. The innovative IMPULSE.FOAM® midsole reacts to each of your steps with an energy impulse. Thereby the IMPULSE.FOAM® does not only return the energy, but also provides maximum cushioning and excellent stability.



## evercushion® CUSTOM FIT MID

Thanks to the evercushion® CUSTOM FIT insoles the safety shoes adapt optimally to the needs of the feet and significantly increase comfort. The highly breathable foam offers excellent cushioning properties.



## POWER PLATE

The innovative POWER PLATE element even improves the cushioning of our IMPULSE.FOAM® sole technology, optimizes the energy return and ensures best possible comfort. POWER PLATE supports the natural rolling movement of the foot and gives highest stability and control in every situation.



## Smooth full leather

The upper made of robust full leather is resistant to abrasion. It offers high protection from moisture penetration and is easy to clean.