

TIMBERLAND PRO® Splitrock Steel Safety Toe PR



TBOA1GH1001

CE EN ISO 20345:2011



FEATURES:

- Premium leather upper
- Thermoplastic polyurethane ankle overlay
- Classic hardware and styling
- Metallic puncture plate
- Steel Safety Toe
- Cement Construction
- Fiberglass shank
- Antimicrobial treated lining for odor control
- Weight 9M 945g

DYNAMIC ANTI-FATIGUE TECHNOLOGY POLYURETHANE FOOTBED:

- Durable: resists compression set over time
- Resilient: recovers for next foot strike
- Mono-sided inverted Anti-Fatigue Technology cones
- Contoured bio-mechanically engineered top surface helps maintain proper gait
- Dynamic arch adapts to different foot shapes for maximum comfort
- Moisture-wicking open-cell top cover

5-12 13 14 15 M

USA Men's	5	5.5	6	6.5	7	7.5	8	8.5	9	9.5	10	10.5	11	11.5	12	13	14	15
USA Women's	6.5	7	7.5	8	8.5	9	9.5	10	10.5	11	11.5	12						
United Kingdom	4	4.5	5	5.5	6	6.5	7	7.5	8	8.5	9	9.5	10	10.5	11	12	13	14
Europe	37	37.5	38	38.5	39	40	41	41.5	42	42.5	43	43.5	44	45	46	47	48	49
Centimeters	23.5	24.0	24.0	25.0	25.0	26.0	26.0	26.5	27.0	27.5	28.0	28.5	29.0	29.5	30.0	31.0	32.0	33.0

ALL-WEATHER THERMOPLASTIC URETHANE OUTSOLE:

- Slip resistant
- Fuel oil resistant per EN ISO 20344:20118.6
- Heat Resistant up to 248°F using EN/ISO 20344:2004 (120°C)
- Abrasion resistant
- Non Marking



TBOA1GH1001

BRITISH STANDARD

Personal protective equipment — Footwear — Test method for slip resistance

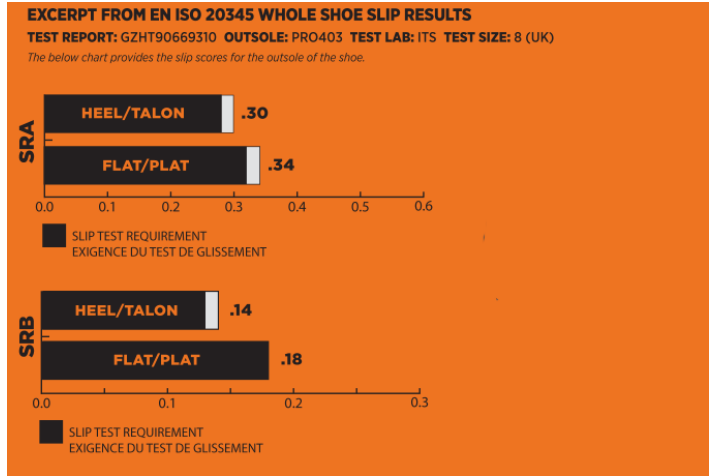


Table A.1 — Requirements for footwear resistant to slip on ceramic tile floor with SLS

Test conditions of ISO 20344:2004/Amd1:2007, Clause A.1	Coefficient of friction
Condition A (forward heel slip)	Not less than 0,28
Condition B (forward flat slip)	Not less than 0,32

A.3 Slip resistance on steel floor with glycerol

Footwear resistant to slip on steel floor with glycerol shall fulfil the requirements of Table A.2.

Table A.2 — Requirements for footwear resistant to slip on steel floor with glycerol

Test conditions of ISO 20344:2004/Amd1:2007, Clause A.1	Coefficient of friction	
	Values to be applied up to and including 2008-12-31	Values to be applied on and after 2009-01-01
Condition C (forward heel slip)	Not less than 0,12	Not less than 0,13
Condition D (forward flat slip)	Not less than 0,16	Not less than 0,18

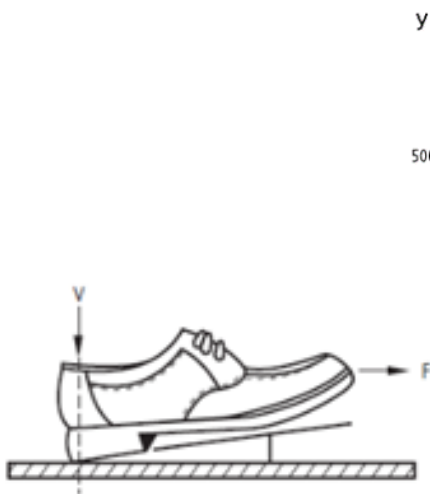


Figure 1a – Forward heel slip

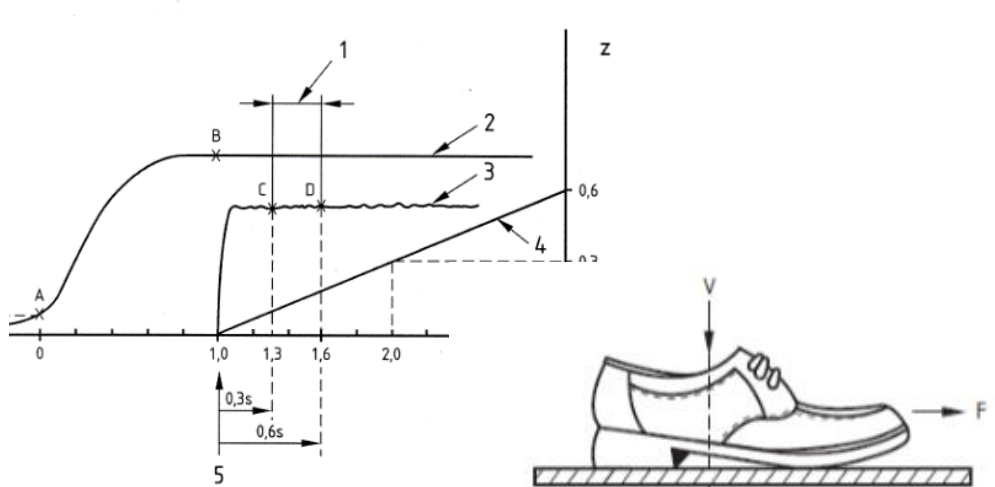
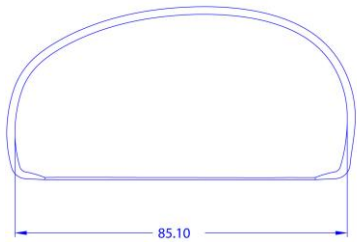
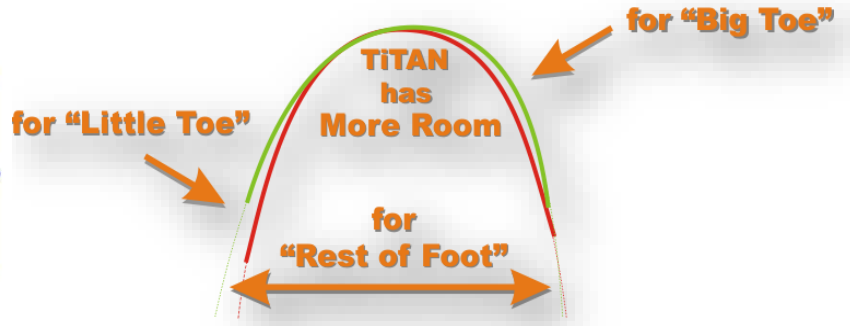
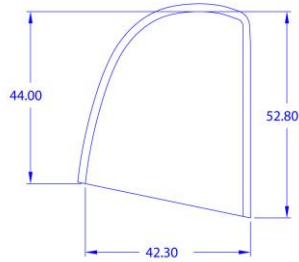
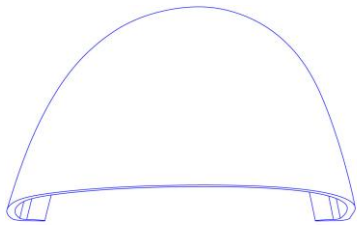


Figure 1c – Forward flat slip

TBOA1GH1001

STEEL TOE: ST1443 EN



ST1443EN- M8

TITAN TOE SHAPE:

Asymmetrical toe shape offers more space in the toe box, where you need it most compared to traditional symmetrical safety toe shapes.

MEASUREMENTS:

(All measurements are external)

HIGHEST POINT ON COLLAR: 7" / 178mm

LOWEST POINT ON COLLAR: 5 3/8" / 136mm

LOWEST OPENING ON BOOT: 5 1/4" / 133mm

HEEL BREAST: 1/2" / 13mm

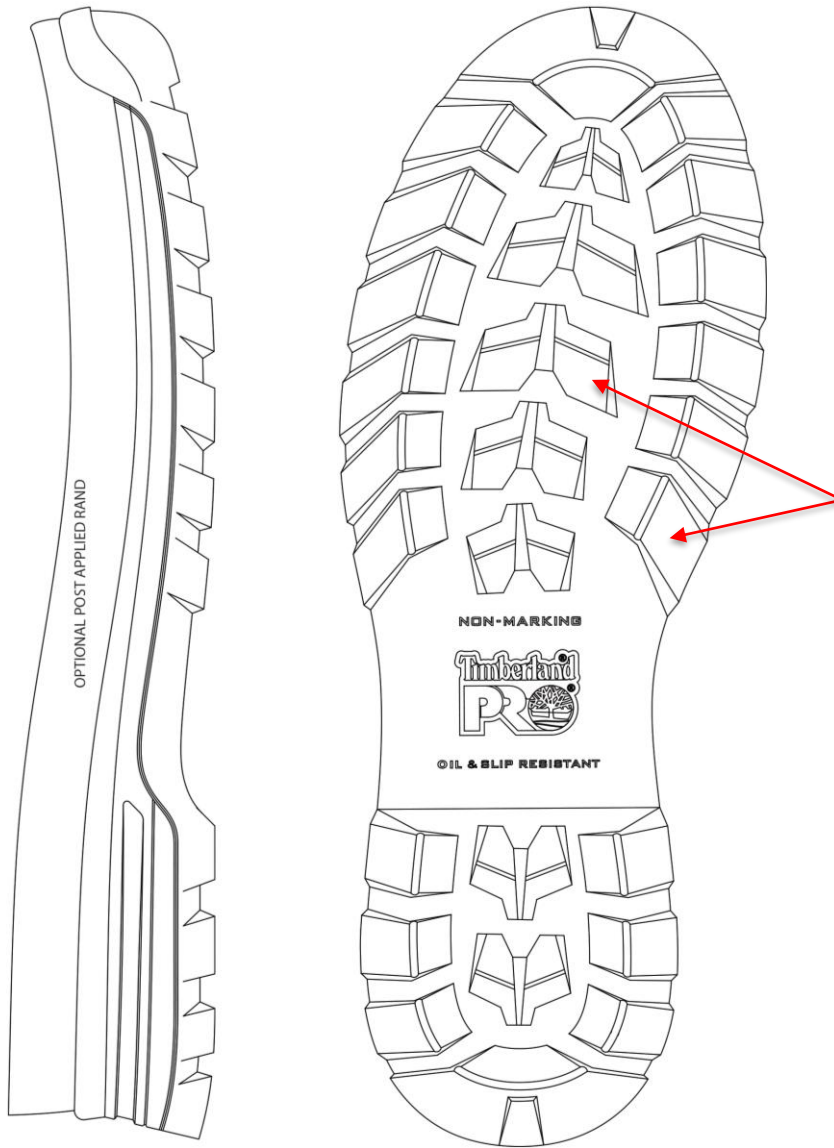


TIMBERLAND PRO® Splitrock Steel Safety Toe PR



TB0A1GH1001

OUTSOLE: (PRO 403) TPU OUTSOLE WITH POLYURETHANE MIDSOLE



- All Weather TPU is specially formulated to maintain flexibility in variable weather conditions, provides enhanced traction on wet and slippery surfaces.
- Lightweight PU Midsole provides enhanced cushioning that resists compression overtime.

Compared to the Original Trail Grip Sole:

- Larger perimeter lugs and center lugs creates more surface area and provides excellent slip resistance on a variety of surfaces.
- The outsole is 6% wider in the forefoot and 9% wider in the heel to enhance stability

OIL RESISTANCE:

Test method	Sample	IRM903 for 46 hrs (ASTM Oil #3)	EN345 for 22 hrs (ASTM Fuel A)	Fuel B for 46 hrs (Jet Fuel)	Diesel for 22 hrs
SATRA TM63	PRO FB#1	+2.3%	+3.4%	+29.6%	+22.8%
	PU	+2.2%	+0.4	+13.5%	+1.0%
	TPU	+1.0%	+0.4	+13.1%	+5.6%
	Standard	</=12%	</=12%	</=60%	No Standard limits, but low values represent best performance.