

TIMBERLAND PRO® 6 IN WORKSTEAD STEEL TOE STEEL PLATE



TBOA1GDJ001



FEATURES:

- Premium waterproof leather
- Steel Toe
- Steel Puncture Plate
- Brass Eyelets with Zinc Dual Purpose Top Hooks
- Mesh lining with antimicrobial treatment
- Cement construction
- Weight 9M 755g

DYNAMIC ANTI-FATIGUE FOOTBED:

- Durable: resists compression set over time
- Resilient: recovers for next foot strike
- Mono-sided inverted Anti-Fatigue Technology cones
- Contoured bio-mechanically engineered top surface helps maintain proper gait
- Dynamic arch adapts to different foot shapes for maximum comfort



Men's 7-12,13,14,15 M
UK 6-14
EU 39-49

THERMOPLASTIC URETHANE OUTSOLE:

- Oil resistant per SATRA EN345
- Abrasion Resistant
- Non-marking
- Slip Resistant

MEASUREMENTS:

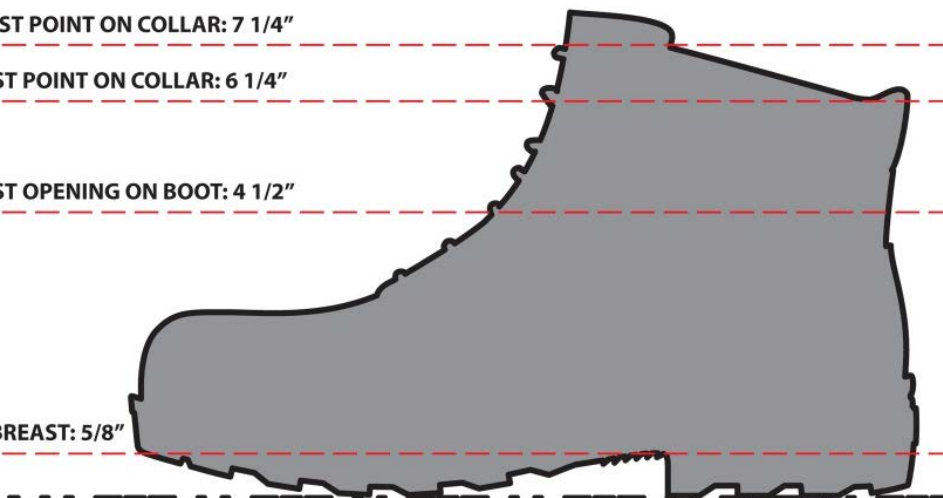
(All measurements are external)

HIGHEST POINT ON COLLAR: 7 1/4"

LOWEST POINT ON COLLAR: 6 1/4"

LOWEST OPENING ON BOOT: 4 1/2"

HEEL BREAST: 5/8"



TBOA1GDJ001

BRITISH STANDARD

Personal protective equipment — Footwear — Test method for slip resistance

Table A.1 — Requirements for footwear resistant to slip on ceramic tile floor with SLS

Test conditions of ISO 20344:2004/Amd1:2007, Clause A.1	Coefficient of friction
Condition A (forward heel slip)	Not less than 0,28
Condition B (forward flat slip)	Not less than 0,32

A.3 Slip resistance on steel floor with glycerol

Footwear resistant to slip on steel floor with glycerol shall fulfil the requirements of Table A.2.

Table A.2 — Requirements for footwear resistant to slip on steel floor with glycerol

Test conditions of ISO 20344:2004/Amd1:2007, Clause A.1	Coefficient of friction	
	Values to be applied up to and including 2008-12-31	Values to be applied on and after 2009-01-01
Condition C (forward heel slip)	Not less than 0,12	Not less than 0,13
Condition D (forward flat slip)	Not less than 0,16	Not less than 0,18

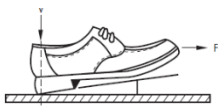
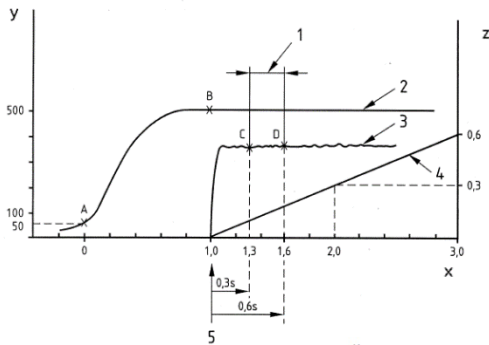


Figure 1a – Forward heel slip

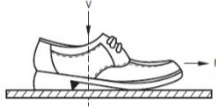


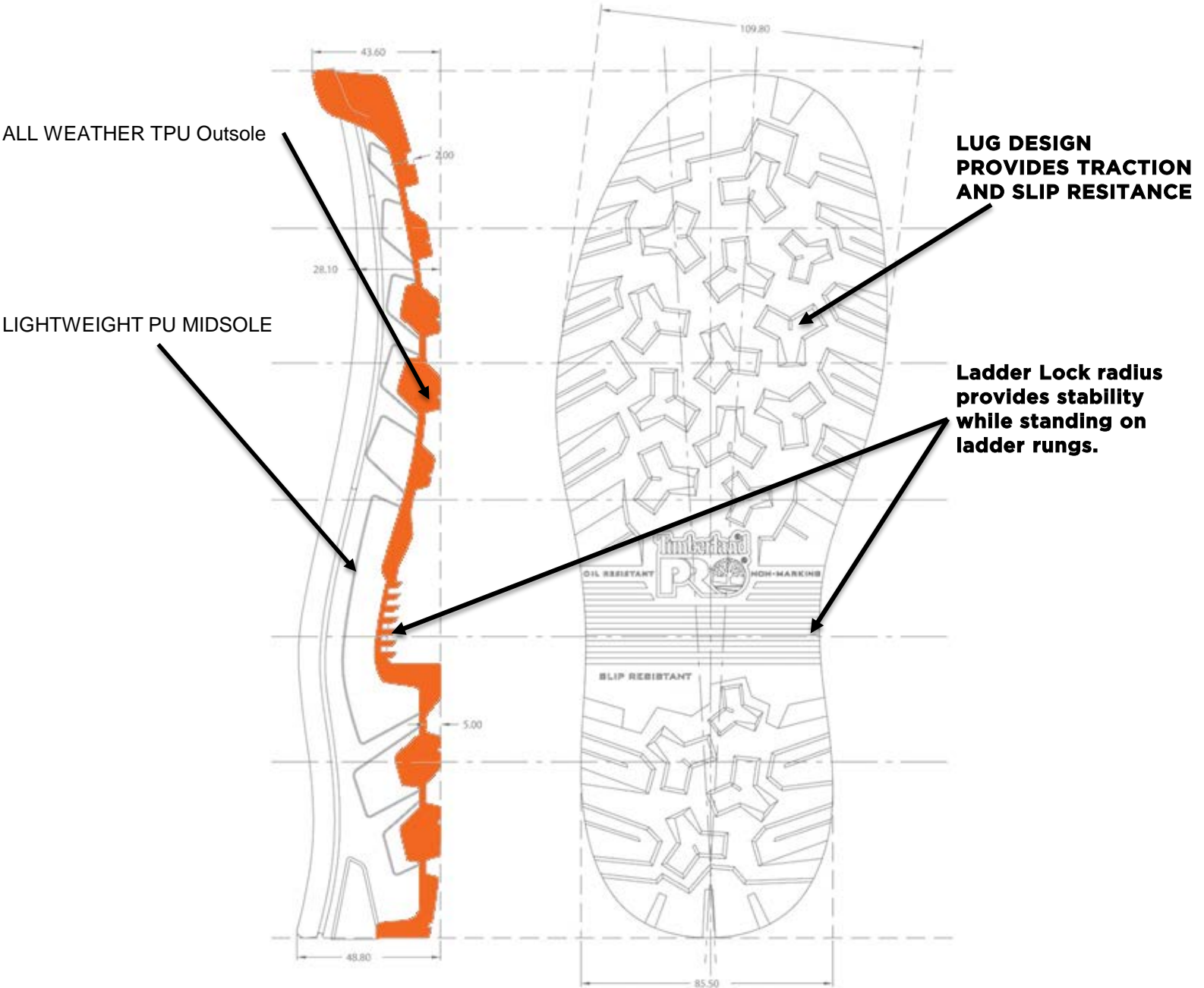
Figure 1c – Forward flat slip

TIMBERLAND PRO® 6 IN WORKSTEAD STEEL TOE STEEL PLATE



TBOA1GDJ001

OUTSOLE: (PRO 375) TPU OUTSOLE WITH POLYURETHANE MIDSOLE



OIL RESISTANCE:

Test method	Sample	IRM903 for 46 hrs (ASTM Oil #3)	EN345 for 22 hrs (ASTM Fuel A)	Fuel B for 46 hrs (Jet Fuel)	Diesel for 22 hrs
SATRA TM63	PRO FB#1	+2.3%	+3.4%	+29.6%	+22.8%
	PU	+2.2%	+0.4	+13.5%	+1.0%
	TPU	+1.0%	+0.4	+13.1%	+5.6%
	Standard	</=12%	</=12%	</=60%	No Standard limits, but low values represent best performance.