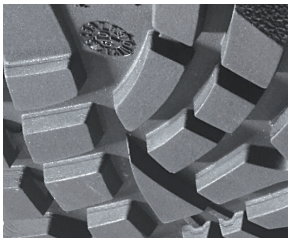


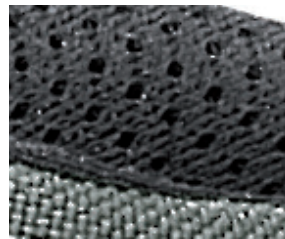


Protection: CompositeCap and flexible FAP® midsole  
 Plus: non-metallic, CORDURA®  
 Upper: greased full leather  
 Lining: BreathActive functional lining  
 Footbed: evercomfort  
 Sole: rubber sole SCUFF CAPS with EVER.FLEX decoupling point  
 300°C heat resistant  
 Sizes/Width: 39 - 48 / 11



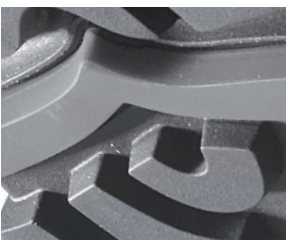
### Rubber Outsole

As you can see, the heavy duty pattern of this hard-wearing, up to 300°C heat resistant HRO rubber outsole has been designed for both optimal security and performance, even in muddy and wet/off-road conditions.



### BreathActive

The micro-channel system of this multi-layered lining provides you with a better breathability and moisture management when work means sweat.



### Ever.Flex

This decoupling point at your heel eases your foot's life when hitting the ground. The flex action allows the heel to find the best contact position according to the user's weight, size and length of stride.



### CompositeCap

Synthetic protective toe cap, lighter than a common steel cap, antimagnetic and thermally insulating.



### evercomfort

This ergonomically shaped footbed provides a correct position and an optimum support to the foot. The perforation and the hydrophobic, antibacterial fabric cover improve and balance the foot climate, while a cushioning pad at the heel absorbs the impacts from outside.



### Scuff Cap

Over-the-toe extra high scuff cap for wearers who kneel a lot in their job.