

THE ERGOLITE COLLECTION:

ATHLETIC-INSPIRED DESIGN, CONSTRUCTION, AND ENGINEERING

IS LIGHTWEIGHT TO REDUCE FATIGUE

TRADEMARK CAT FOOTWEAR DURABILITY

ERGONOMIC ALL-DAY WEAR DESIGN SUPPORTS NATURAL BODY MOVEMENT

BUILT FOR SERVICE AND LIGHT-DUTY OCCUPATIONS

MEETS GLOBAL TESTING STANDARDS FOR INDUSTRIAL PERFORMANCE



STREAMLINE

- **ONE-PIECE** MOLDED MESH AND DIRECT INJECT PU UPPER
- **DUAL-DENSITY** EVA MIDSOLE
- **PU OPEN CELL** FOAM FOOTBED
- **T-1000** RUBBER OUTSOLE
- **STROBEL AND CEMENT** CONSTRUCTION
- **NON-METALLIC**
- **CT** COMPOSITE TOE SAFETY
- **BRX** EXTREME SLIP RESISTANCE
- **ERGO** ERGO DESIGN PHILOSOPHY
- **EH** ELECTRICAL HAZARD
- **ESD** ANTISTATIC

SWITCH

- SYNTHETIC **PUBUCK AND NYLON MESH** UPPER
- **EVA** MIDSOLE
- **MOLDED EVA** FOOTBED
- **T-1000** RUBBER OUTSOLE
- **STROBEL AND CEMENT** CONSTRUCTION
- **ST** STEEL TOE SAFETY
- **BRX** EXTREME SLIP RESISTANCE
- **ERGO** ERGO DESIGN PHILOSOPHY
- **ESD** ANTISTATIC

www.cat.com ©2013 Wolverine World Wide. CAT, CATERPILLAR and their respective logos, "Caterpillar Yellow" and "Caterpillar Corporate Yellow", as well as corporate and product identity used herein, are trademarks of Caterpillar and may not be used without permission.



THE NEW ERGOLITE COLLECTION.
ERGONOMIC COMFORT, TRADEMARK
CAT DURABILITY, AND INCREDIBLY
LIGHTWEIGHT.



L I G H T

W E I G H T



C H A M P

THE *ERGO* LITE COLLECTION: UNRIVALED FOOTWEAR FOR SERVICE OCCUPATIONS THAT DEMAND LIGHTWEIGHT COMFORT AND DURABILITY.

ATHLETIC-INSPIRED

DESIGN, CONSTRUCTION AND ENGINEERING

MEETS GLOBAL TESTING STANDARDS

ASTM, EN, CSA - CERTIFIED FOR INDUSTRIAL PERFORMANCE

POWERED by
ERGO

THE ERGO COMFORT SYSTEM USES A SERIES OF ANATOMICALLY-ACCURATE AND BIOMECHANICALLY-CONSIDERED FEATURES ENGINEERED TO INTEGRATE STABILITY, FLEXIBILITY AND COMFORT INTO THE RUGGED AND DURABLE BOOTS YOU EXPECT FROM CAT.



*STREAMLINE PATTERN SHOWN

COMFORTABLE

THE *ERGO* LITE COLLECTION'S ERGONOMIC DESIGN SUPPORTS NATURAL BODY MOVEMENT FOR ALL-DAY COMFORT.

1

CONTOURED FOOTBED

SHAPED TO FIT THE FOOT, BREATHABLE AND SHOCK ABSORBANT

2

SAFETY TOE

COMPOSITE OR STEEL TOE KEEPS FEET PROTECTED FROM IMPACT AND COMPRESSION (ALSO AVAILABLE IN SOFT TOE)

3

SCULPTED DESIGN

CREATES ARCH SUPPORT, HEEL CUSHIONING, AND COMFORT

4

SCULPTED EVA MIDSOLE

PROVIDES SUPERIOR MOTION CONTROL AND SUPPORT WHILE ABSORBING SHOCK AND RETURNING ENERGY

5

FOAM COLLAR

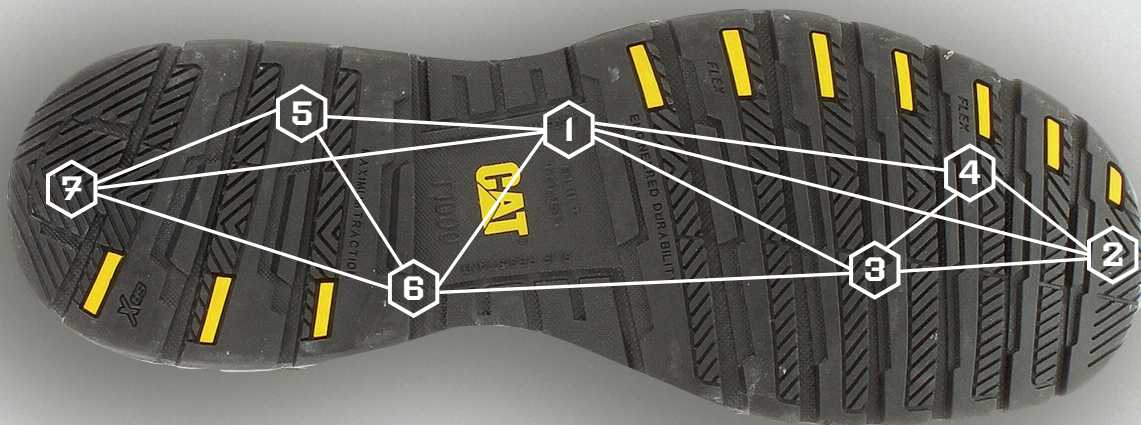
CRADLES FOOT AROUND ANKLE BONE AND PROVIDES CUSHIONING DURING MOTION



LIGHTWEIGHT

THE *ERGOLITE COLLECTION* IS UNIQUELY CONSTRUCTED TO BE LIGHT WEIGHT AND REDUCE FATIGUE AFTER LONG HOURS IN THE WORKPLACE.

- **CEMENT CONSTRUCTION** IS LIGHTWEIGHT AND FLEXIBLE
- FLEXIBLE AND BREATHABLE **MESH UPPER MATERIALS**
- LIGHTWEIGHT **EVA MIDSOLE**



DURABLE

CAT FOOTWEAR-ENGINEERED BEST-IN-CLASS DURABILITY COMES STANDARD ON THE *ERGOLITE COLLECTION*.

- ① **T-1000 RUBBER OUTSOLE** IS ENGINEERED FOR LONG-WEARING DURABILITY AND ABRASION RESISTANCE
- ② BEST-IN-CLASS **SRX EXTREME SLIP RESISTANCE** PROVIDES TRACTION AND GRIP
- ③ **MULTIPLE LUGS** FOR ADDED STABILITY
- ④ **FLEX GROOVES** ALLOW THE SHOE TO BEND AND FLEX WITH EASE
- ⑤ **BEVELED BACK LUGS** RELEASE DIRT AND MUD WHILE IN MOTION
- ⑥ 90-DEGREE **HEEL GRIP**
- ⑦ **HEEL CLEFT** HELPS LESSEN THE SHARPNESS OF IMPACT FOR IMPROVED COMFORT

*TESTED AGAINST COMPETITIVE SAMPLES